

WINTERVIEW COURT

PROFESSIONAL/MECIAL OFFICE CONDOMINIUMS



**AVAILABLE
FOR SALE**

2940 #4
800 sq. FT

2950 #3
1,750 sq. FT.

2950 #2
2,500 sq. FT.

2960 #1 & #3
2,500 sq. FT.

\$225 - \$310/sq. FT.

FOR MORE INFORMATION:

ANDREW J. SALUAN

T: 239.596.9500

F: 239.596.9505

E: ANDREW@AJSREALTYGROUP.COM

WWW.AJSREALTYGROUP.COM



WINTERVIEW COURT
2930 - 3000 IMMOKALEE ROAD
NAPLES, FLORIDA

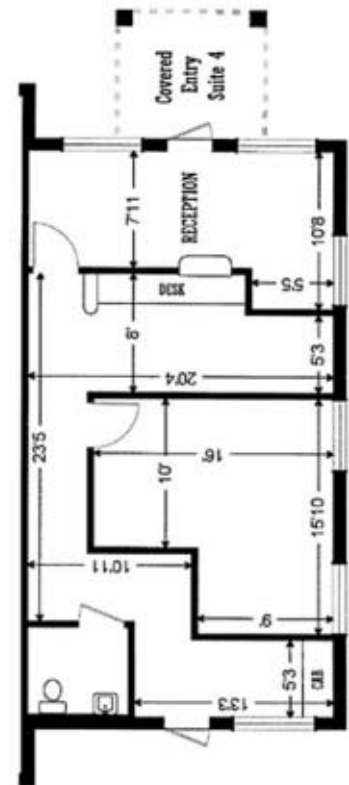
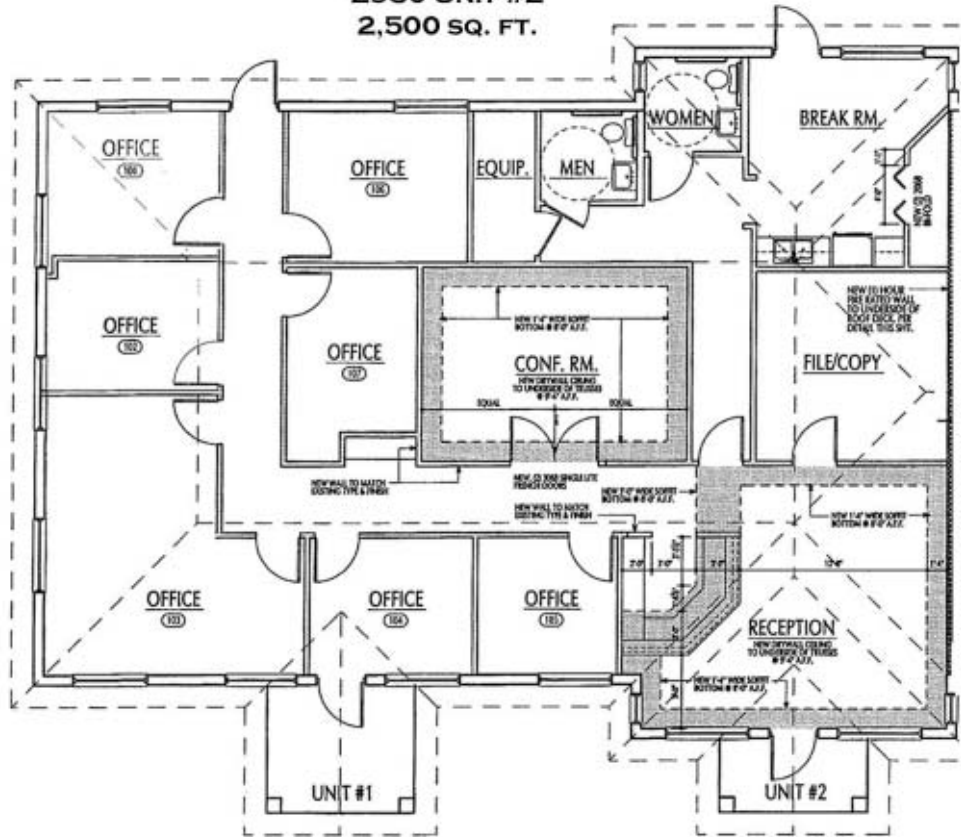


INVESTMENT
DEVELOPMENT
MANAGEMENT
LEASING

REALTY GROUP, INC.

2950 IMMOKALEE ROAD, SUITE 2 • NAPLES, FLORIDA 34110

2950 UNIT #2
2,500 SQ. FT.



2940 UNIT #4
800 SQ. FT.

FOR MORE INFORMATION:

ANDREW J. SALUAN
T: 239.596.9500
F: 239.596.9505
E: ANDREW@AJSREALTYGROUP.COM

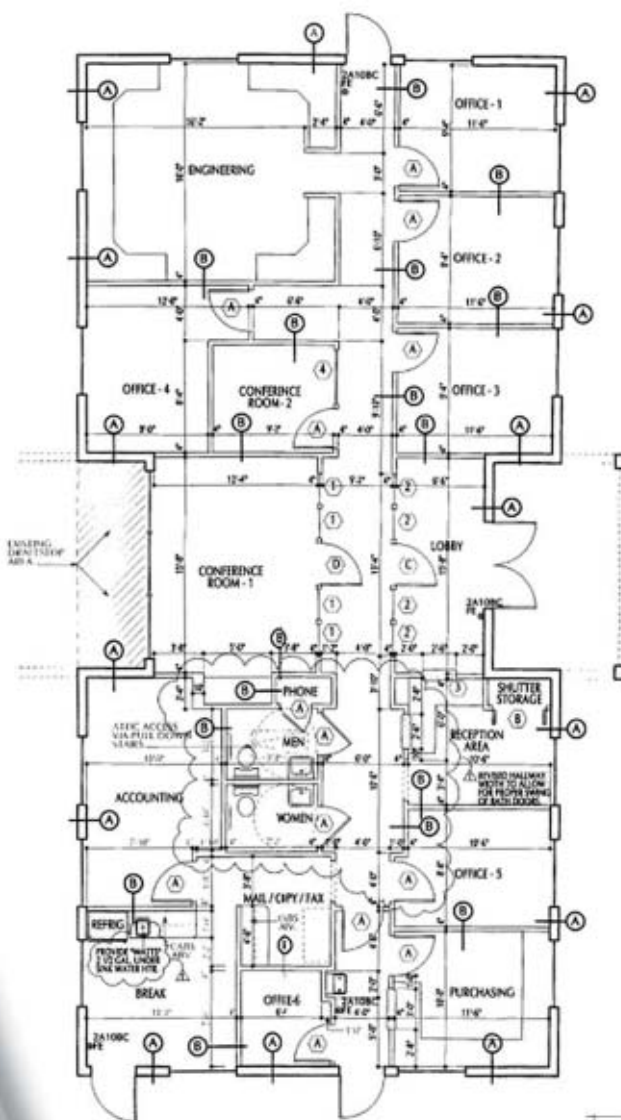
WWW.AJSREALTYGROUP.COM



INVESTMENT
DEVELOPMENT
MANAGEMENT
LEASING

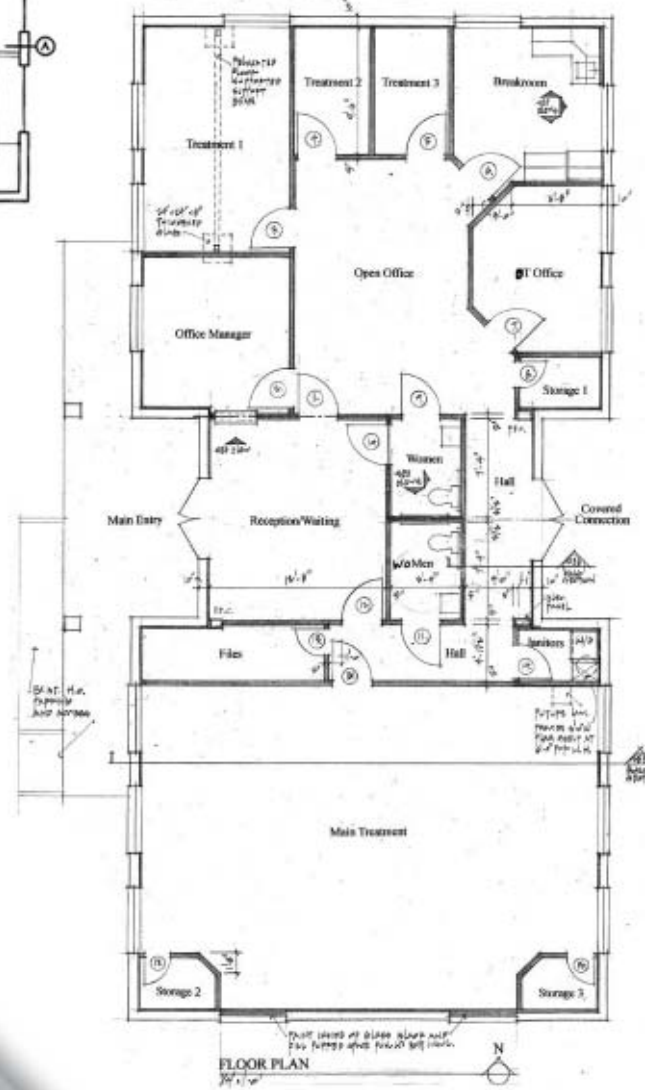
2950 IMMOKALEE ROAD, SUITE 2 • NAPLES, FLORIDA 34110

©2009 AJS REALTY GROUP, INC.
THE STATEMENTS HEREIN, WHILE NOT GUARANTEED, ARE SECURED FROM RELIABLE SOURCES.
SUBJECT TO PRIOR SALE, LEASE, WITHDRAWAL AND PRIOR CHANGE WITHOUT NOTICE.



**2960 UNIT #1
2,500 SQ. FT.**

**2960 UNIT #3
2,500 SQ. FT.**



FLOOR PLAN

FOR MORE INFORMATION:

ANDREW J. SALUAN
 T: 239.596.9500
 F: 239.596.9505
 E: ANDREW@AJSREALTYGROUP.COM

WWW.AJSREALTYGROUP.COM



INVESTMENT
 DEVELOPMENT
 MANAGEMENT
 LEASING

2950 IMMOKALEE ROAD, SUITE 2 • NAPLES, FLORIDA 34110

©2009 AJS REALTY GROUP, INC.
 THE STATEMENTS HEREIN, WHILE NOT GUARANTEED, ARE SECURED FROM RELIABLE SOURCES.
 SUBJECT TO PRIOR SALE, LEASE, WITHDRAWAL AND PRIOR CHANGE WITHOUT NOTICE.