

Class A Medical Office Near Gulf Coast Medical Center

14290 Metropolis Ave. • Suite 2 • Fort Myers, FL 33912



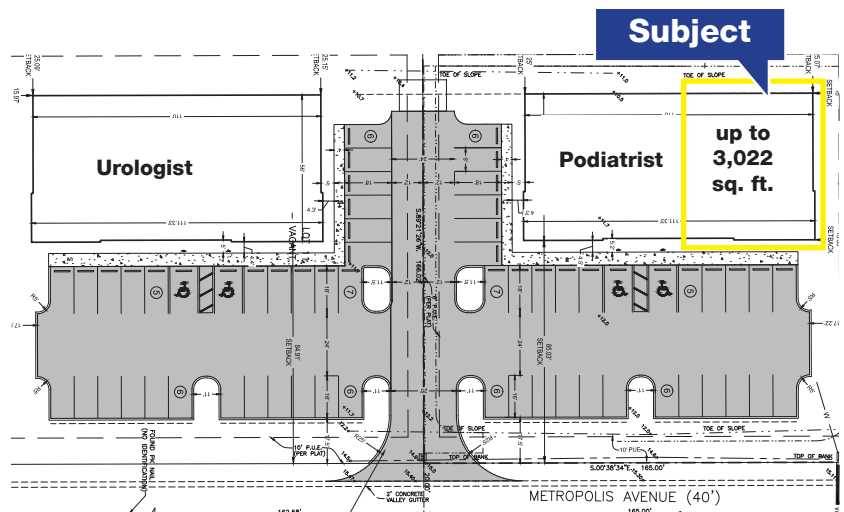
Availability: For Lease

Leasable Area: up to 3,022 SQ. FT.

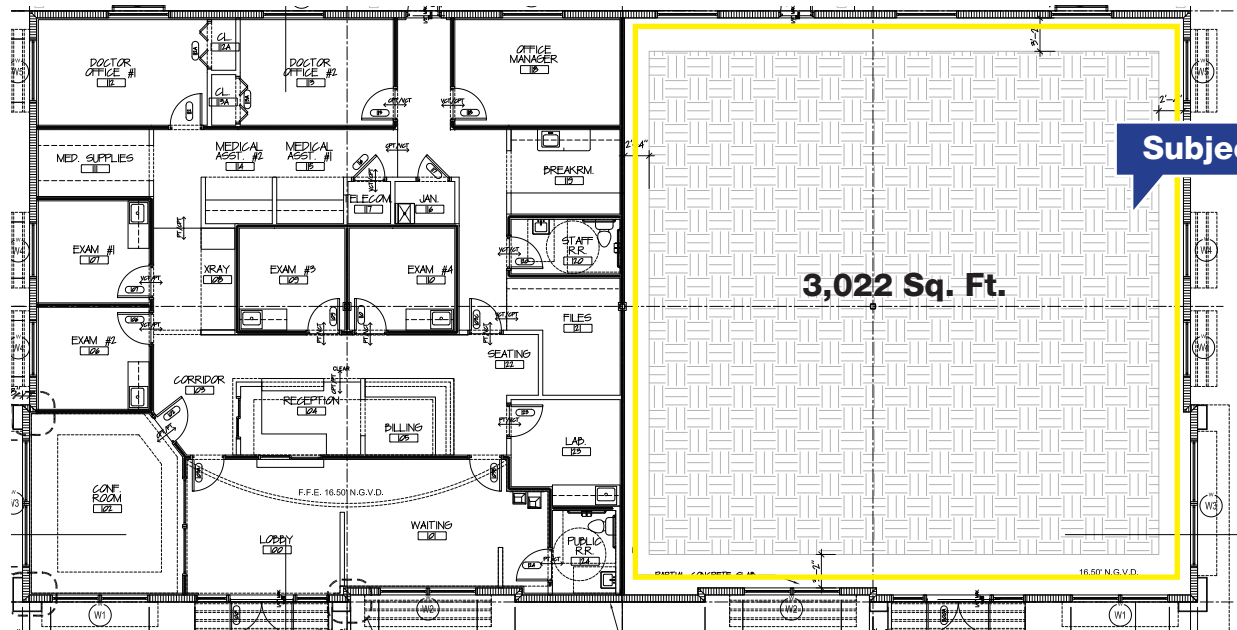
Price: \$16.00 / SQ. FT + CAM

Property Highlights

- Brand New Superior Construction
- Well-maintained medical corridor in Fort Myers
- Close proximity to Lee Health (Gulf Coast Medical Center)
- CPD Zoning
- Significant Tenant Improvement Allowance Offered



Class A Medical Office Near Gulf Coast Medical Center



For More Information



4980 Tamiami Trail N • Suite 201 • Naples, Florida 34103



Lara Bargar

T: 239.771.9151

F: 239.529.3932

Lara@AJSRealtyGroup.com